

SHU Outreach

Activity for Schools and Colleges

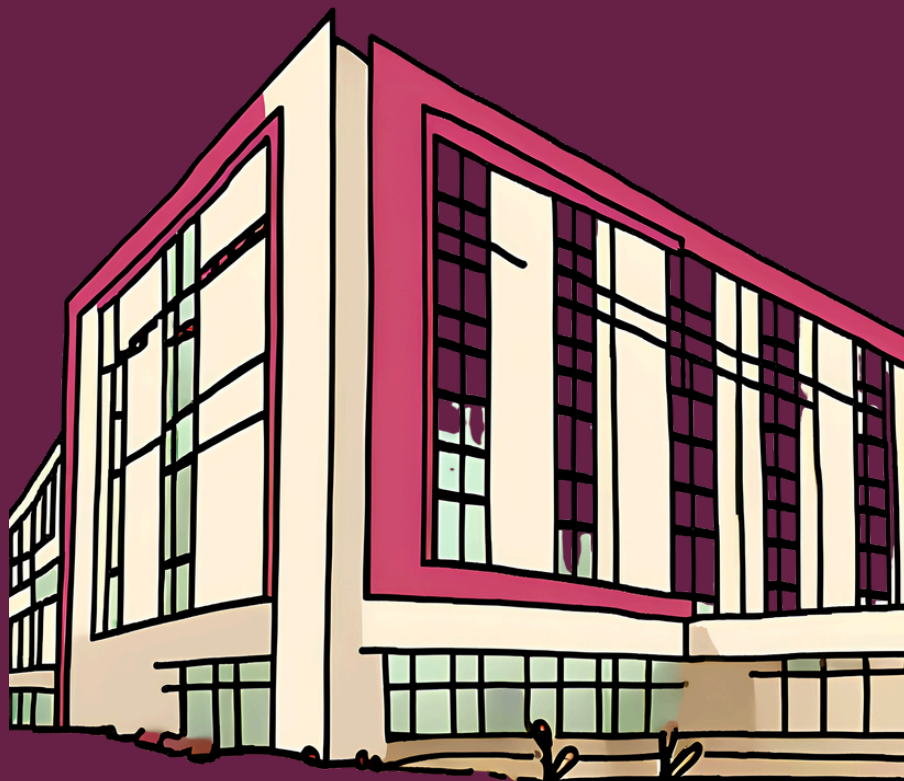
2024/2025



Welcome

The School and College Liaison & Outreach Team supports teachers and advisers in their mission to help students make informed decisions about Higher Education. Our outreach work encompasses a broad range of activities, from talks and workshops to subject-specific activity, to ensure that students are equipped with the right knowledge for their next steps.

Please see detailed information about our offer below; all activities are bookable by emailing sclo@shu.ac.uk. Please do not hesitate to get in touch for more information.



Our Talks

(30 minute sessions)

TALKS

Our talks, tailored for Y12, Y13 and mature students, can be delivered either in classrooms or assembly sessions.

SHOULD I GO
TO
UNIVERSITY?

CAN I AFFORD
TO GO TO
UNIVERSITY?

SHOULD I GO TO
UNIVERSITY AS A
MATURE LEARNER?

WHAT IS A
DEGREE
APPRENTICESHIP?

HOW DO I
APPLY FOR
UNIVERSITY?

WHAT IS IT LIKE BEING
A STUDENT AT
SHEFFIELD HALLAM
UNIVERSITY?



Our Talks

SHOULD I GO TO UNIVERSITY?



This 30-minute talk provides an overview and introduction to Higher Education and university. Here, students will learn about the benefits and opportunities available within Higher Education to support them in their future decision making. This session is recommended at the beginning of the academic year.

Skills: listening; raising aspirations.

Gatsby Benchmark: seven.

SHOULD I GO TO UNIVERSITY AS A MATURE LEARNER?



This 30-minute talk, designed specifically for mature students, provides an introduction to studying at university for lifelong learners.

Students will hear about the options and support available, whilst being encouraged to identify their own next steps. As with our 'should I go to university' talk, this session is recommended at the beginning of the academic year.

Skills: listening; raising aspirations.

Gatsby Benchmark: seven.



Our Talks

HOW DO I APPLY FOR UNIVERSITY?



Our 'applying to university' talk will guide students through the UCAS application process, equipping learners with the necessary information to navigate applying to university successfully. This session will additionally explore how to make decisions regarding choosing a university and course. Skills: listening; critical thinking. Gatsby Benchmark: seven.

CAN I AFFORD TO GO TO UNIVERSITY?



This 30-minute talk provides students with an overview of the Student Finance application process, with a range of timescales and financial examples provided. Time is also dedicated to detailing possible financial support to those applying to university, such as grants, bursaries and scholarships. This session is recommended for delivery in the spring term for Y13 students. Skills: listening. Gatsby Benchmark: seven.



Our Talks

WHAT IS A DEGREE APPRENTICESHIP?



Our degree apprenticeship talk provides an overview and introduction to higher and degree apprenticeships. Students will learn about the similarities and differences between the traditional undergraduate vs degree apprenticeship route whilst gaining an insight into the application process. Time will also be dedicated at the end of the session for students' questions.

Skills: listening; raising aspirations.

Gatsby Benchmark: seven.

WHAT IS IT LIKE BEING A STUDENT AT SHEFFIELD HALLAM UNIVERSITY?



This engaging talk provides students with an insight into university life, highlighting the wealth of opportunities and experiences available to students in Higher Education.

Topics such as meeting new people, joining clubs and societies and university study and accommodation will be covered in this talk.

Skills: listening.

Gatsby Benchmark: seven.



Our Workshops

(60 minute sessions)

WORKSHOPS

Designed for Y12 and Y13 students. Suitable for classroom delivery with a maximum of 30 students. Access to table-top desk space is required.

WHICH
COURSE
SHOULD I DO?

HOW DO I
BUDGET AT
UNIVERSITY?

FEELING
OVERWHELMED BY
YOUR STUDIES?

AM I
UNIVERSITY
READY?

WHAT MAKES A
GOOD PERSONAL
STATEMENT?

HOW DO I APPLY
FOR A DEGREE
APPRENTICESHIP?



Our Workshops

WHICH
COURSE
SHOULD I DO?



This 60-minute workshop aims to introduce students to the range of different courses available in Higher Education. Students will complete a series of interactive activities to discover more about their skills and interests and learn about how these map onto different university courses. Students will leave this session informed and excited by the myriad of course options available within Higher Education.

Skills: speaking; listening; raising aspirations.
Gatsby Benchmark: seven.

FEELING
OVERWHELMED BY
YOUR STUDIES?



New for the 2024-25 academic year, this 30-60-minute session focuses on student wellbeing in light of academic pressure. Here, students are invited to consider sources of academic pressure and are collectively supported to identify ways to mitigate this. Students will leave this session equipped with a range of techniques to support revision and academic performance, with an emphasis on wellbeing and self-care.

Skills: raising aspirations; staying positive.
Gatsby Benchmark: seven.



Our Workshops

WHAT MAKES A GOOD PERSONAL STATEMENT?



This workshop provides students with an insight into how to write an effective personal statement as part of the UCAS application process. Students will receive practical advice and guidance regarding what admissions tutors are looking for, as well as an opportunity to draft a personal statement and discuss key points in small groups.

Skills: speaking; listening; raising aspirations.
Gatsby Benchmark: seven.

HOW DO I BUDGET AT UNIVERSITY?



This session will introduce students to the concepts of budgeting and money management from the viewpoint of a university student. In this enjoyable session, students will make decisions regarding how to spend their student loan for a fictitious character, navigating a range of realistic scenarios to find out whether they are left with a surplus or a deficit. Students will leave this session with a clearer idea of how to manage money in the future and an awareness of the financial support available to those at university.

Skills: raising aspirations; staying positive.
Gatsby Benchmark: seven.



Our Workshops

AM I UNIVERSITY READY?



This interactive workshop supports students in their transition to Higher Education with relevant advice and guidance. Students will reflect on their transferable skills, explore different forms of support and receive tips on balancing academic studies with extracurricular activities. By the end of this session, students will acquire a robust toolkit to manage the challenges of Higher Education with resilience, optimism and confidence.

Skills: aiming high; listening.

Gatsby Benchmark: seven.

HOW DO I APPLY FOR A DEGREE APPRENTICESHIP?



Our degree apprenticeship workshop builds on students' knowledge of the degree apprenticeship pathway and looks to support learners in finding, and applying to, degree apprenticeship vacancies. Students will leave with greater confidence when completing applications and an invitation to our on-campus degree apprenticeship recruitment fair.

Skills: problem solving; raising aspirations.

Gatsby Benchmark: seven.



Key contact:

For more information or to book, please contact:

Schools & Colleges Liaison and Outreach Team

Email: sclo@shu.ac.uk

Social media: @ShuOutreach

Linkedin: Sheffield Hallam University Outreach Team

