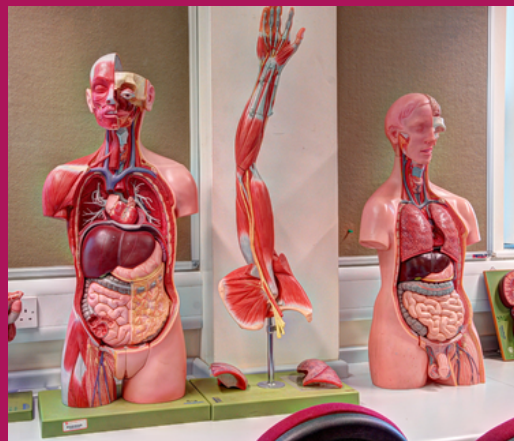


# School of Health and Social Care

School and College  
Outreach 24/25





# CONTENTS

---



- 1 Health and Social Care at SHU
- 2 Our Outreach Offer
- 3 On-Campus Taster Days
- 4 Example Taster Day
- 5 Off-Campus Activities
- 6 Application and Interview Support
- 7 SHU Outreach Offer
- 8 SHU Progress- Applicant Support



# Health and Social Care at SHU

**Sheffield Hallam University is one of the largest health and social care course providers in the UK. We support over 4,000 students on our TEF Gold-rated undergraduate and postgraduate courses, apprenticeships and continuing professional development opportunities.**

Our state-of-the-art facilities, which include mock operating rooms, wards and community settings, allow students to undertake sophisticated simulated learning experiences in a safe, supportive environment, preparing them for placement and their graduate careers.

Our courses are developed in collaboration with medical specialists and patients to provide students with the skills required to become the healthcare professionals of the future. 98% of our health and social care students are in work or further study fifteen months after graduating (Graduate Outcomes Survey, 2021), making an immediate difference to the lives of patients in South Yorkshire and beyond.

We are passionate about developing the health and social care workforce of the future, and are excited to work with you to inspire and support the next generation of professionals.



# Our Outreach Offer

We offer a range of on-campus and in-school experiences designed to inspire and inform the next generation of health and social care student. Primarily aimed at KS4 and KS5 groups, our offer includes course talks, interactive workshops, and on-campus taster days.

All of our engagement opportunities can be tailored to a group's specific interests or ambitions, and aim to support students to make an informed decision about their next steps after school or college. Sheffield Hallam University offers the following undergraduate health and social care courses, and we would encourage you to always let us know of any subjects your students are particularly interested in.

## Nursing & Midwifery

- Adult Nursing
- Child Nursing
- Learning Disability Nursing & Social Work
- Mental Health Nursing
- Midwifery

## Social Work & Social Care

- Social Work
- Working with Children, Young People & Families (Foundation)

## Allied Health Professions

- Diagnostic Radiography
- Occupational Therapy
- Operating Department Practice
- Paramedic Science
- Physiotherapy
- Radiotherapy & Oncology

To book or to find out more information about our health and social care offer, please contact Jack Ridleigh, Senior Student Recruitment Engagement Officer: [sclo@shu.ac.uk](mailto:sclo@shu.ac.uk)



# On-Campus Taster Days

Our on-campus taster days offer unparalleled insight into what it's like to study a health and social care course at university. They typically comprise of skills workshops, academic-led taster activities, and campus and facilities tours. An example timetable is included in page ...

## Workshops

We offer a range of workshops designed to help your students make decisions about their future study and career options. These include:

- Studying Health and Social Care at SHU
- Skills and Application Support
- Student Life Q&A
- Student Finance for Health and Social Care

## Academic Talks

Our academics offer a range of subject-specific talks and workshops designed to introduce your students to a specific course area. In these sessions, your students will explore the unique aspects of specific healthcare professions and gain an understanding of how they fit into the broader health and social care landscape.

## Campus and Facilities Tours

During your visit, we will take you on a guided tour of the campus to give your students an insight into what studying at university looks like in practice. This can include a visit to the library, teaching spaces, and specialist simulated learning environments. This time also gives students an opportunity to ask any questions they might have about student life at Hallam, and see the University in action.



# Example Taster Day

Timings	Session
10:00	Arrival and Welcome
10:15 - 11:00	Studying Health and Social Care at SHU
11:00 - 11:45	Campus and Facilities Tour
11:45 - 12:30	HSC Skills Workshop
12:30 - 13:00	Lunch
13:00 - 14:00	Academic Taster Session
14:00	Departure

# Off-Campus Activities



## Studying Health and Social Care at SHU

**Duration:** 45 minutes

**Age group:** KS4, KS5+

This session is designed to provide a broad overview of the health and social care courses available at SHU, as well as the skills and experiences required for each profession. We also cover information about study, placements, student finance and student support. This is perfect for students who are still considering what course area they may want to choose, or which university they may want to study at.

## Skills and Application Support Workshop

**Duration:** 45 minutes

**Age group:** KS5+

In this session, we look at the transferrable skills that students may need in order to study and work in the health and social care sector. We also provide practical advice and guidance for health and social care applications and interviews, plus an opportunity to ask questions.

## Simulated Learning Workshop

**Duration:** 45 minutes

**Age group:** KS5+

In this practical session, we take students through a simulated hospital scenario using Oxford Medical Simulation (OMS). Students will be able to work together to decide what steps need to be taken in the scenario, and begin to consider the skills required for a career in health and social care.

## Academic Talks

Our academic staff can also visit your school or college to talk about their course area or profession and deliver a subject specific overview, dependant on availability.

# Application & Interview Support Sessions



These online Q&A sessions provide advice and guidance for students considering an application to health and social care courses, or in the process of applying.

---

**Duration:** 60 minutes (online)

**Age group:** KS5+

**Times:** Wednesdays, 16:30-17:30, throughout the academic year (bespoke sessions for school and college groups available on request)

The online sessions cover:

- The admissions process including how and when to apply
- What to include in your personal statement
- What to expect during the interview stages
- Myths and misconceptions about health and social care courses

Led by members of the University's health and social care recruitment team, our support sessions are brilliant opportunities for students to ask questions about the application and interview process, or find out more about courses they're specifically interested in.

The sessions are applicable to anyone applying to an undergraduate or postgraduate course prior to qualifying as a registered health and social care professional.





# SHU OUTREACH OFFER

Sheffield Hallam University offer talks and workshops to support students to make an informed decision regarding higher education. Below is an overview of what schools and colleges can access, these can be stand alone sessions or incorporated into a subject taster day.

## TALKS

Our talks, tailored for Y12, Y13, and mature students, can be delivered either in classrooms or assembly sessions.

SHOULD I GO TO UNIVERSITY?

SHOULD I GO TO UNIVERSITY AS A MATURE LEARNER?

HOW DO I APPLY FOR UNIVERSITY?

CAN I AFFORD TO GO TO UNIVERSITY?

WHAT IS A DEGREE APPRENTICESHIP?

WHAT IS IT LIKE BEING A STUDENT AT SHEFFIELD HALLAM UNIVERSITY?

## WORKSHOPS

Designed for Y12 and Y13 students. Suitable for classroom delivery with a maximum of 30 students. Access to table-top desk space is required.

WHICH COURSE SHOULD I DO?

FEELING OVERWHELMED BY YOUR STUDIES?

WHAT MAKES A GOOD PERSONAL STATEMENT?

HOW DO I BUDGET AT UNIVERSITY?

HOW DO I APPLY FOR A DEGREE APPRENTICESHIP?

AM I UNIVERSITY READY?

# Access Support at Hallam



## SHU Progress

SHU Progress provides support for applicants whose personal circumstances might mean that there are barriers to going to university.

The scheme provides additional support in the year of application and throughout the application process, including the transition to becoming a university student.

### How to join

In order to join the scheme, students must be nominated by a professional (such as a teacher, social worker, support worker, etc.) who knows the applicant and their background. You can find the nomination form, as well as further details on eligible groups and the support on offer, by scanning the QR code. Alternatively, visit [shu.ac.uk/shuprogress](https://shu.ac.uk/shuprogress)

If you have any questions, you can email the team at:

**SHU-Progress@shu.ac.uk**

or call **0114 225 4777**



## Black British Applicant Support

As a university we recognise the additional barriers that many prospective students face when pursuing higher education. As part of the response to this, our Access team also provide additional support for black British applicants, with tailored support throughout the application and transition process.

For more information, you can email the team at **Access@shu.ac.uk**

**Sheffield  
Hallam  
University**  
Knowledge Applied

## Jack Ridleigh

Senior Student Recruitment Engagement Officer  
j.ridleigh@shu.ac.uk



[sclo@shu.ac.uk](mailto:sclo@shu.ac.uk)



[shuoutreach.com](http://shuoutreach.com)

**Department  
of Health and  
Social Care**

